

48Gigabit Ports + 4 SFP Web Smart Switch

Product Overview

The LevelOne GSW-4876 is an intelligent Layer 2 Web Smart Switch with 48 10/100/1000 BASE-T ports with 4 SFP transceiver slots. The switch contains 48 RJ-45 ports that operate at 10 Mbps or 100 Mbps, half or full duplex, or at 1000 Mbps, full duplex. All ports support automatic MDI/MDI-X operation and auto-negotiation.

Collapsed Backbone

The GSW-4876 is an excellent choice for mixed Ethernet, Fast Ethernet, and Gigabit Ethernet installations where significant growth is expected in the near future. In a basic stand-alone configuration, it can provide direct full-duplex connections for up to 48 workstations or servers. The server is easily expandable by adding direct full duplex connections to workstations or servers. Further expansion is possible by connecting hubs or switches.

Remote Connections with Fiber Cable

Fiber optic technology allows for longer cabling than any other media type. A 1000BASE-SX (MMF) link can connect to a site up to 550 meters away, a 1000BASE-LX (SMF) link up to 5 km, and a 1000BASE-ZX link up to 100 km. This allows a switch stack to serve as a collapsed backbone, providing direct connectivity for a widespread LAN.

Switch Architecture

The switch employs a wire-speed, non-blocking switching fabric. This permits simultaneous wire-speed transport of multiple packets at low latency on all ports. The switch also features full-duplex capability on all ports, which effectively doubles the bandwidth of each connection.

The switch uses store-and-forward switching to ensure maximum data integrity. With store-and-forward switching, the entire packet must be received into a buffer and checked for validity before being forwarded. This prevents errors from being propagated throughout the network.

Network Management Options

The switch contains a comprehensive array of LEDs for "at-a-glance" monitoring of network and port status. They also include a management agent that allows you to configure or monitor the switch using its embedded management software.



GSW-4876

Key Features

- Features 48 Gigabit Auto-negotiation Ethernet ports
- Provides 4 optional mini GBIC transceiver slots for extending the network distance
- Non-blocking switching architecture
- Full support for VLANs with GVRP
- Up to 8 LACP or static 8-port trunks
- Layer 2/3/4 CoS support through four priority queues
- IGMP multicast filtering and snooping
- Support for jumbo frames up to 9KB
- Manageable via Web

Technical Specification

Device Specifications

- **Standards Compliance**
IEEE 802.3/IEEE 802.3u
IEEE 802.3ab Gigabit 1000T
IEEE 802.3z Gigabit Fiber
IEEE 802.3x Flow Control and Back Pressure
IEEE D802.1Q Virtual LAN
- **Network Interface**
48x 10/100/1000Base-T, with auto-negotiation
4x mini-GBIC ports (shared)
- **Protocol**
CSMA/CD
- **Switch Architecture**
Store-and-Forward
- **MAC Address Table**
8K entries
- **Buffer Architecture**
400Kbytes,
- **Aggregate Bandwidth**
48Gbps
- **RAM Buffer**
1024KByter
- **Address Table**
8K entries per device

Device Management

Web management
Software Upgrade
TFTP/ Console firmware upgradeable

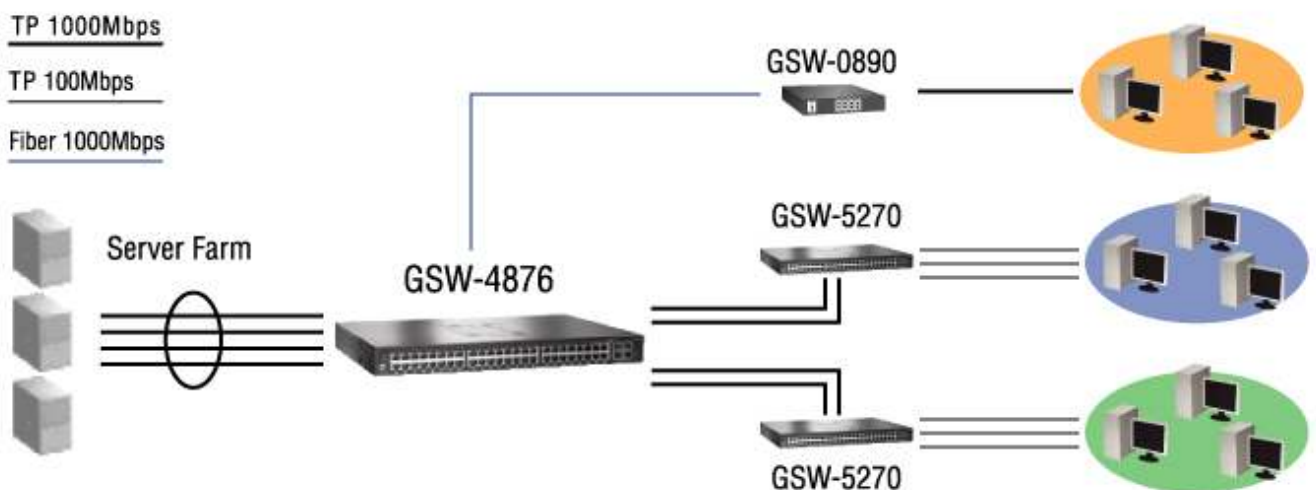
Physical Specifications

- **LEDs**
Power
Link/Port Activity
- **Power Supply**
100~240V AC, 50/60Hz (Internal power)
79 Watts (Power Consumption)
- **Temperature**
Operating: 0°C ~40°C (32°F ~ 104°F)
Storage: -40°C ~70°C (-40°F ~ 158°F)
- **Humidity**
Operating: 10% ~ 90% (Non-condensing)
Storage: 5% ~ 90% (Non-condensing)
- **Dimension**
440mm (W) x 310mm (D) x 44mm (H)

Certification

- EMI standard
- CE, FCC

Product Diagram





ProCon LAN GSW-4876

H/W ver. : 1.x
one world_one brand_one level_

Order Information

GSW-4876: 48Gigabit Ports + 4 SFP Web Smart Switch

For more information, please contact your LevelOne representative, or visit www.level1.com
All technical specifications are subject to change without notice.
All mentioned brand names are registered trademarks and property of their owners

www.level1.com

