

24-Port 10/100 Rackmount Smart Switch + 2 SFP Combo Ports

Product Overview

The LevelOne GSW-2473 Web Smart Switch is an excellent choice for mixed Ethernet, Fast Ethernet, and Gigabit Ethernet installations. It features advanced network and switch management features all accessible via a Web-based interface. The switch includes 24 Fast Ethernet ports and 2 Port SFP Combo Ports.

Network Management Options

The switch contains several key network management features, designed to manage data traffic efficiently. GSW-2473 supports 802.1p Class of Service for packet or data prioritizing, 802.1Q Tag VLAN management for managing different networks within the current network and provide bandwidth control.

Switch Architecture

The switch employs a wire-speed, non-blocking switching fabric. This permits simultaneous wire-speed transport of multiple packets with low latency on all ports. The switch also features full-duplex capability and Auto Negotiation MDI/MDI-X on all ports.

Long Distance Connections with Fiber Cable

Fiber optic technology lets installers connect networks over the longest distances available. The GSW-2473 comes with 2 SFP Combo ports allowing users to choose the fiber optic transceiver that best suits their environment. A 1000BASE-SX (Multi-mode) link can connect to a site up to 550 meters away, a 1000BASE-LX (Single-mode) connects to a site up to 10 km away, and a 1000BASE-ZX link connects to a site up to 70km away.



GSW-2473

Key Features

- 24-Port Combo Web Smart Switch for high-performance office networks
- Supports Auto-negotiation and Auto-MDI/MDI-X on all ports
- Supports full-duplex IEEE 802.3x flow control
- Store-and-forward switching architecture
- Complies with IEEE 802.3ab, 802.3u and 802.3, 802.z standards
- Supports NWay protocol and auto-detect duplex mode
- Wire-speed packet filtering and forwarding rate
- Features Port-Based 802.1Q Tag VLAN
- Supports 802.1p Class of Service with 2 per port priority queues
- Supports Port Base, Tag Base and Type of Service Priority
- 4K MAC address with auto learning
- Large 8.8G switching bandwidth
- Web based switch management interface
- 19-inch rack-mountable with included mounts

Technical Specification

Network Interface

Standard Compliance

IEEE 802.3 10Base-T Ethernet
 IEEE 802.3u 100Base-TX Ethernet
 IEEE 802.3ab 1000Base-T Ethernet
 IEEE 802.3z Gigabit fiber
 IEEE 802.3x Flow control and Back Pressure
 IEEE 802.3ad Port Trunk
 IEEE 802.1p Class of Service

Network Connectivity

10/100Tx: 24x RJ-45 Ports with Auto MDI/MDI-X
 10/100/1000T: 2x RJ-45 with Auto MDI/MDI-X
 100/1000T: 2 SFP Sockets

NWay Protocol Support

10/100Mbps: Full/Half Duplex
 1000Mbps: Full Duplex

Switch Architecture

Store and Forward architecture
 Back-plane: 8.8Gbps

Flash ROM

512Kbytes

Mac Address

4K MAC address table

Physical Specifications

Power Supply

100 ~ 240V AC/50~60Hz Internal Power
 17.4W power consumption

LED

Power, Link/Activity

Operating Environment

Temperature: 0°C ~ 45°C
 Humidity: 10% ~ 90% (Non-condensing)
 Storage: -40°C ~ 70°C

Dimensions

440mm (W) x 120mm (D) x 44mm (H)

Certification

FCC Class A, CE
 UL, cUL, CE/EN60950-1

Management Features

Device Management Interface

Web-based management interface

Port Configuration

Links speed
 Link mode
 Port Enable/Disable
 Port Flow Control Enable/Disable
 Port Auto negotiation

Port Trunk

Max 3 Trunk groups
 Max 4 users per group

VLAN

Port Based VLAN
 32 VLAN Entries

QoS

Port Based priority
 TOS/DiffServ priority
 802.1p priority tag
 TCP/UDP port number based

Class of Service

2 Queues – High/Low Priority

Bandwidth Control

Ingress and Outgress traffic
 32Kbps ~ 256Kbps configurable

DHCP

Provide DHCP client functions

Broadcast Storm Filter

Disable/Enable

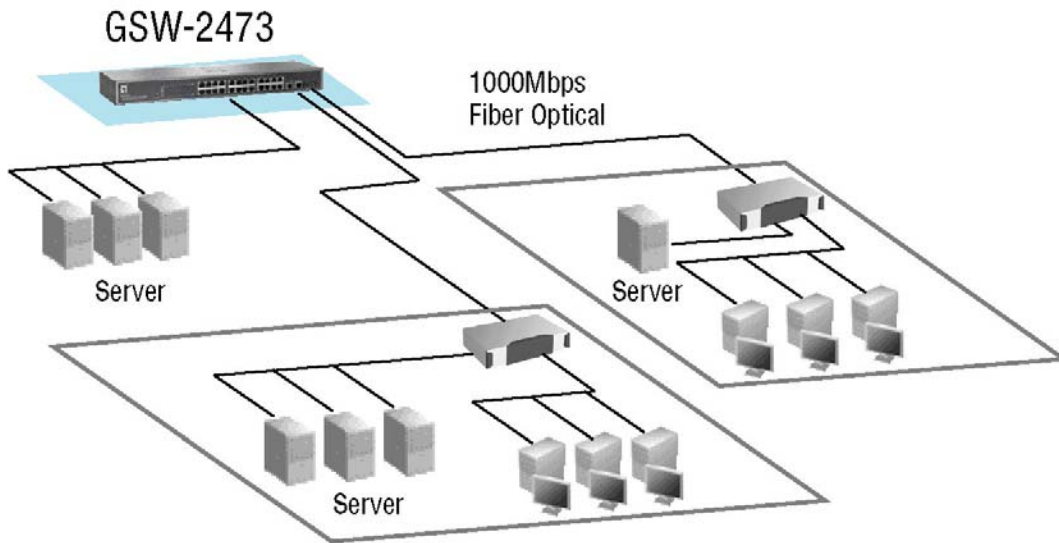
Firmware Update

Web/TFTP update
 TFTP backup and restore

Package Contents

- GSW-2473 Gigabit Web Smart Switch
- AC Power Cord
- Rack-mount brackets
- User Manual CD

Product Diagram



Order Information

GSW-2473: 24-Port 10/100 Rackmount Smart Switch + 2 SFP Combo Ports